

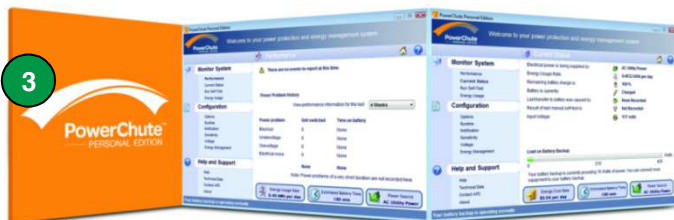
APC Back-UPS 350 / 500 / 650

BK350EI, BK500EI, BK600EI

APC's Back-UPS 350EI, 500EI and 650EI offer guaranteed power protection for computers and other electronics in your home or business. Models provide enough battery backup power so you can work through short length power outages as well as safeguard your equipment from damaging surges and spikes that travel along utility and data lines. Together with a variety of standard features, APC's Back-UPS 350EI, 500EI and 650EI are perfect choices to protect your productivity from the constant threat of bad power and lost data.

Product applications:

PC
CCTV
POS Equipment
Projector with impulse power



Product Features:

- 1 LED Indicator and Audible Alarms**
Quickly understand the unit and power status through visual and audible indicators.
- 2 4 IEC Outlets**
 - **3 battery backup and surge protection**
Keep critical electronic equipment running when the power goes out or fluctuates at dangerous levels, so you can protect your work and save your data.
 - **1 surge protection only**
Protect your secondary electronics from harmful surges and spikes without reducing battery capacity used to run primary electronics during power outages.
- 3 USB /Serial Connectivity and PowerChute Software**
Use your computer to access additional power protection and management features:
 - Preserves your work, shuts down system during outages
 - Restarts your system, minimizing work disruptions
 - Enables customization of your Back-UPS settings
 - Monitors and displays power and battery status
- 4 Telephone Data Line Surge Protection**
Guards against surges and spikes traveling over an analog phone line.
- 5 Push Button Circuit Breaker**
Provides for easy recovery from circuit overloads and protects your fuse box and electronics from electrical damage.
- 6 Automatic Diagnostic Testing**
Periodic battery self-test ensures early detection of a battery that needs to be replaced, ensuring your unit is ready when you need it.
- 7 2 Yr Warranty**
APC offers a 2 year warranty with free technical phone and online support, providing customer peace of mind.



LARMANA



by Schneider Electric

Back-UPS BK350EI, BK500EI, BK650EI Specifications

Model Number	BK 350EI	BK500EI	BK650EI
Output			
Output Capacity	350VA / 210W	500 VA / 300W	650 VA / 400W
Output Voltage / Frequency (On utility)	230V / 47-63 Hz		
Output Voltage / Frequency (On battery)	230V +/- 8%, 50 or 60 Hz +/- 1 Hz		
Output Connections	4 IEC 320 C13 outlets (3 battery backup and surge protection, 1 surge protection only and 2 IEC Jumpers)		
Waveform Type	Stepped Approximation to Sine Wave		
Input			
Input Voltage / Frequency	230V / 47-63 Hz +/- 3 Hz		
Input Connection	1.8M power cable IEC-320-C14		
Surge Protection			
AC Power Surge Protection	All outlets		
Data Line Surge Protection	(2) RJ-45 phone/fax/modem/DSL		
Physical			
Unit Dimensions (H x W x D)	165 x 91 x 284 mm		
Unit Weight	6.32 kg	6.03 kg	
Shipping Dimensions (H x W x D)	178 x 241 x 368 mm	494 x 185 x 415 mm	
Shipping Weight	7.05 kg	7.31 kg	
Color	White		
UPC Code	731304016342	731304016359	731304219781
Battery			
Battery Type	Maintenance-free, sealed lead-acid battery, leak proof		
Battery Size	12 Volt, 7Ah	12 Volt, 9 Ah	
Management			
Alarms	Visual (LED) and audible alarms		
Warranty	2 years repair or replace		
Auto-Shutdown Software	PowerChute Personal Edition		

APC by Schneider Electric

132 Fairgrounds Rd
West Kingston, RI 02892

www.apc.com

